

Proving ground driving license B on the ATP proving ground

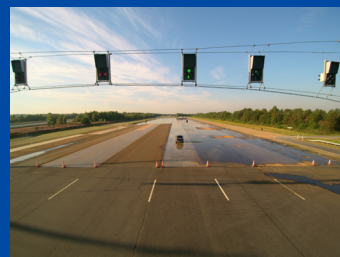
- one-day training course, prerequisite: proving driving license C -
(or a comparable driving qualification from a partner proving ground)

Theoretical part

- Refreshing the theory from the basic qualification and advanced driving dynamics topics

Practical part

- Inner and outer safety
- Optimal seating position and steering wheel attitude
- Slalom driving
- Brake refresher exercises
- Brake training (alternate training, danger and emergency braking, etc.)
- Over steering and under steering
- Reading curves
- High-speed driving on the ideal line



Benefits from ATP

- Training with qualified instructors and ATP training vehicles
- Providing the different proving tracks (Braking Tracks, Handling Track and Wet Handling Track)
- Vehicle preparation including all costs for fuel, tyres, repairs of wearing parts, etc.
- Catering for the participants (coffee breaks, lunch)
- Personal identification for driving on the ATP proving ground and other proving grounds



Recognition

This training course is being recognised as a **basic qualification** by the following proving ground operators as a driving permit: Audi AG, BMW AG, Bosch GmbH, Continental Teves GmbH, Ford AG (Lommel), IDIADA Group, MAGNA STEYR, Mercedes-Benz Group AG, SEGULA Technologies GmbH (former proving ground of Opel AG), Porsche AG, RDW Lelystad, TRW and Volkswagen AG.



Driving qualification

In a working group of German test operators and OEMs, there is a regular exchange regarding the content of the basic qualification. It is at the discretion of the participating operators to recognize the partner's driving qualifications as equivalent. Please confirm the recognition of your qualification with the respective operator. The recognition of the ATP GmbH driving license is the sole responsibility of the respective operator. We specifically point out that further, additional qualifications and trainings depending on the driving programmes may be required on some proving grounds..

In case you need further documents or if you have any questions, please feel free to contact us!

Participation requirements

- Participation is only possible if the attendant holds the ATP proving ground driving licence C (or a comparable driving qualification from a partner proving ground) and has acquired this qualification within the last three years
- In possession of a valid driving license for passenger cars
- Prior experience with vehicles with manual transmissions
- The training is conducted in English
- The exercises during the training are evaluated. Upon satisfactory performance, the driving license and a certificate of participation will be sent after the training

Melanie Collmann
phone: +49 4961 975-366
eMail: melanie.collmann@atp-papenburg.de

Claudia Dirkes
phone: +49 4961 975-310
eMail: claudia.dirkes@atp-papenburg.de

Prices and Dates 2025

For detailed information regarding prices and training dates, please contact Mrs Collmann or Mrs Dirkes.

