

Proving ground driving license B on the ATP proving ground

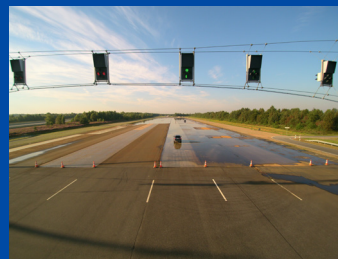
- two-day training course -

Theoretical part

- Introduction behaviour and basic rules on the test area
- Driving basic rules
- Fundamental vehicle dynamics
- Braking techniques
- Possible vehicle reactions
- Over steering and under steering

Practical part

- Optimal seating position and steering wheel attitude
- Training view guidance and steering wheel guidance
- Brake training
(alternate training, danger and emergency braking, etc.)
- Slalom driving
- Load alternation exercises
- Over steering and under steering
- Fast lane change
- Drifting on the skidpad (40 m radius)
- Ideal line driving on the Handling Track



Benefits from ATP

- Training with qualified instructors with 8 participants and 8 ATP vehicles
- Providing the different proving tracks
(Braking Tracks, Vehicle Dynamics Area, Handling Track and Wet Handling Track)
- Vehicle preparation including all costs for fuel, tyres, car repairs, etc.
- Catering for the participants
- Personal identification for driving on the ATP proving ground and other proving grounds



Recognition

This training course is being recognised by the operators of the following proving grounds as a driving permit:

Audi AG, BMW AG, Bosch GmbH, Continental Teves GmbH, Ford AG (Lommel), IDIADA Group, MAGNA STEYR, Mercedes-Benz Group AG, SEGULA Technologies GmbH (former Opel AG), Porsche AG, RDW Lelystad, TRW and Volkswagen AG

Driving qualification

In a working group of German test operators and OEMs, there is a regular exchange regarding the content of the basic qualification. It is at the discretion of the participating operators to recognize the partner's driving qualifications as equivalent. Please confirm the recognition of your qualification with the respective operator. The recognition of the ATP GmbH driving license is the sole responsibility of the respective operator. We specifically point out that further, additional qualifications and trainings depending on the driving programmes may be required on some proving grounds.

In case you need further documents or if you have any questions, please feel free to contact us!

Participation requirements

- In possession of a valid driving license for passenger cars
- **Prior experience with vehicles with manual transmissions**
- The training is conducted in English
- The exercises during the training are evaluated. Upon satisfactory performance, the driving license and a certificate of participation will be issued at the end of the training

Melanie Collmann

phone: +49 4961 975-366

eMail: melanie.collmann@atp-papenburg.de

Claudia Dirkes

phone: +49 4961 975-310

eMail: claudia.dirkes@atp-papenburg.de

Prices and Dates 2024

For detailed information regarding prices and training dates, please contact Mrs Collmann or Mrs Dirkes.

